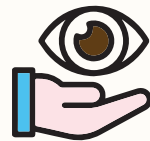


EVO Visian ICL

- STAAR Surgical has more than 20 years of experience in providing high quality vision without the burden and hassle of glasses and contact lenses.
- There have been over a million ICLs implanted worldwide.
- EVO Visian ICL is made of biocompatible collamer - a proprietary material exclusively used by STAAR Surgical.

What are the advantages of ICL?

- Safe and painless
 - Your eyes will be numbed during the procedure, so there will be no pain.
- Quick procedure
 - The entire procedure for both eyes takes only 30 minutes.
- Can treat high prescription and thin cornea.
 - Unlike cornea refractive procedures, ICL will not affect the cornea.



- No risk of dry eyes
 - ICL will not cause or contribute to dry eyes, a common side effect associated with laser - based correction.
- Permanent, yet reversible
 - While ICL is designed to be permanent in the eye, it can be removed and/or replaced if necessary.
- Invisible and undetectable
 - As the ICL is placed behind the iris, it is not visible to the naked eye, and you will not feel the lens in your eye.



Contact us

OasisEye Specialists

 1800 18 7676

 oasiseye.my

 linktr.ee/oasiseye

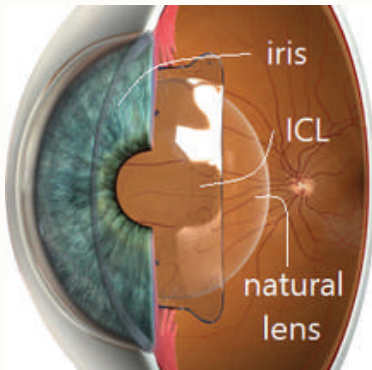


ICL
(Implantable
Collamer Lens)



What is ICL ?

- ICL is a procedure where a lens customized to your eye power is implanted into your eye, without removal of any cornea tissue.
- ICL can treat myopia as high as -18.0D, hyperopia as high as +10.0D, and astigmatism as high as 6.0D.
- The lens is made of a biocompatible material which does not require any maintenance.



- The lens will be placed in between the iris and the natural lens in the eye.



How is ICL done ?

1. A complete eye assessment will be done to determine the suitability to undergo the surgery, to measure the size, and power of lens to be implanted.



2. On the surgery day, your eyes will be dilated and numbed with eye drops.



3. The lens will be implanted into the eye through a 3mm painless incision.



4. The lens is then adjusted and positioned properly in the eye.



5. The entire procedure for both eyes will take a mere 30 minutes.



6. After a few hours, the doctor will examine your eyes. Then you will be allowed to go home, rest, and continue using the prescribed medication.



Who is suitable for ICL ?

- 21 years old and above
 - It is not advisable to undergo ICL surgery before age 21.



- No pre-existing eye conditions
 - Individuals with eye conditions such as cataract or glaucoma should not undergo ICL.



- General health normal
 - Do inform your doctor if you have any existing medical conditions.



- High prescription
 - Those with high 'power' are more suited for ICL compared to refractive laser procedures.



- Active individuals who wish to be free from glasses and contact lens.



- ICL is very convenient for those who enjoy sports such as scuba diving, rock climbing or football.